

August 2022

Greetings from M&M Lumber!

With summer nearly over and kids heading back to school, we hope everyone had a fantastic summer vacation and spent time with friends and family. Watch for kids and school busses in the neighborhood these next few months.



Fed Chair Jerome Powell is expected to speak today from Jackson Hole, Wyoming in regards to the feds most recent meeting and possibly raising interest rates higher.

You might be wondering...how did the country's biggest central bank conference end up in Wyoming? The answer: fly-fishing.

In 1982, when the Kansas City Fed was looking for a prominent speaker for its annual conference, organizers wanted to go big and have Fed Chair Paul Volcker come speak. They knew that Volcker was an avid fly fisherman, so they chose the fly-fishing mecca of Jackson Hole to convince him to attend. It worked, and the Fed has held its annual symposium there ever since. (Source: Morning Brew)

Inflation has hit about every sector in the supply chain and it is also being overrun with hidden freight and other costs. A bad hurricane season could quickly change pricing, availability and supply issues.

We continue to be thankful to be in a sector of the economy that has done well the past two years with all the covid changes and supply chain issues. We appreciate your business and look forward to helping you on your projects. Continue to be mindful of the crazy high prices, longer lead times and continue to have a price escalation clause.

We do know there are other lumber yards in Tulsa, and we Thank You for the opportunity to be your supplier and allowing us to be a business partner with you. Whether you're replacing a door, remodeling a bathroom, adding to your deck, or building a house from the ground up...We are willing to help you on your next project, no matter the size!!

Don't forget to 'Stay Social' with us by following us on Facebook and Instagram!! If you have job site photos, we'd love to show them off on our Facebook and Instagram page!

We appreciate your business as well as your feedback. If you have any questions, feel free to call or email us! Thank you for supporting M&M Lumber, the place to be for your building and hardware needs.

Sincerely,

M&M Lumber
918-627-1926

Market Report:

Market Update:

Gypsum: Drywall continues to be on allocation with lead times around 4 weeks depending on the product and manufacture.

Hardie is only making 3x5 concrete backer for the box stores. USG is on allocation and PermaBase continues to be backlogged with long lead times.



Roofing: Roofing remains on allocation but lead times continue to improve. Hurricanes could change this market quickly.

Rebar: The scrap steel market continues to drop. This recent trend is impacting domestic prices. Wire mesh has seen a drop in pricing as well though prices are still very elevated compared to pre-covid prices. Inventory for remesh has been available for the most part. Rebar has softened in prices but not as much as the scrap market. Less expensive import rebar has been hitting the ports mainly due to the price gap between domestic rebar and import rebar. This price gap is large enough for domestic fabricators and distributors to begin buying import rebar again.

Lumber & Panels: The lumber and panel markets have been hovering where it is believed to be the bottom. Most species and sizes of dimensional lumber are available. There have been slight increases followed by decreases but overall not much change. Transportation continues to be an issue.

Several mills are talking 'curtailment' or 'scheduled maintenance' in order to raise prices of goods.

Very little was said about the US Department of Commerce announcing its final determination on Canadian countervailing and anti-dumping duties. The duty will drop to an average of 8.59% from the 17.91% that it was. This is a welcome relief in lumber prices for items that come from Canada!

Other Vendors and related news:

- Insulation continues to be on allocation and is expected to be in tight supply through Q4.
- Hardie siding has officially come off of allocation...however distribution is still hit and miss depending on the product.
- Simpson Strong-Tie implemented another price increase August 15. The pre-paid freight terms have remained the same.
- Red Devil will implement a 5% price increase effective September 1 for their spackle, sealants, grouts and adhesives.
- As of August 1, Goldberg Brothers will have a surcharge to order less than \$100.
- Adhesives continue to remain a problem across the country as the chemical manufactures are still trying to catch up.
- Many of our import nails are now subject to an approximate 17% duty. [Click here](#) for specifics on the dumping duty.
- Moisture Shield announced a price increase effective August 1.

-The US Department of Energy (DOE) has issued two new rules that impact general use light bulbs. These rules require a minimum 45 lumens per watt standard on all general light bulbs. This will eliminate a number of standard incandescent or halogen type bulbs with a medium screw base that is intended for general service applications and has not less than 310 lumens and nor more than 2600 lumens. This does not include some types of specialty bulbs like appliance bulbs, bug bulbs, colored bulbs, or grow bulbs. Most bulbs are expected to be replaced with an LED equivalent.

Manufacturers have until January 1, 2023 to sell existing stock. Distributors and retailers have until July 1, 2023 to sell through existing stock.

-UK dock workers at Felixstowe port have been on strike for 8+ days. This could have a ripple impact on US trade and cause additional bottlenecks in the supply chain flow.

-The Canadian Pacific Railway Limited announced a new two year collective agreement with the Teamsters Canada Rail that included pay increase and increased benefits. The Canadian Pacific is a transcontinental railway in Canada and the US with direct links to ports on the east and west coast.

-It is speculated that Europe's energy crisis is going to get worse and the ripple effects will be felt around the globe as Russia cuts off natural gas to Europe and factories slow down or halt for lack of fuel. Europe will have no choice but to ration gas this winter. How much will largely depend on the severity of the winter weather. Heating of homes, hospitals and other key facilities will be prioritized. Manufacturing of steel, aluminum and zinc products will be affected due to the amount of electricity used for production. Cement, glass, paper and chemicals could all be affected if they cannot run at full capacity through the winter months.

Lumber Yard News:

What is happening around M&M Lumber?



Birthdays & Anniversaries

Birthdays:

Caleb	July 8 th
Ryan McD	July 13 th
Rod	July 27 th
Ryan R	August 6
Wade	August 8
Jennifer	August 20
Gary	August 26

Anniversaries:

Jose	4 year!
Scott	22 years!!
JoJo	10 years!
Caleb	7 years
Mike E	6 years
Chris	5 years
Luke	2 years

Around the Yard:

New Face:

We have a new face here at M&M Lumber!

We are super excited to have Joey here at M&M .

He is currently working in the south yard to learn our products and the way the yard works. He will be in delivery trucks the next few days, will do a short stint in the door shop to see how the door shop operates and will end up on the front counter where he will be full time helping customers get in and out of the store. Next time you're in, say hello to Joey!

Labor Day:

M&M Lumber will be closed both Saturday, September 3 and Monday, September 5 for Labor Day.

We wish everyone a safe and relaxing weekend!



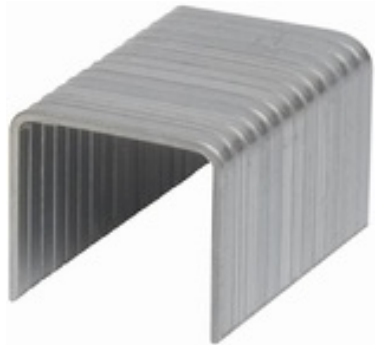
New Products:

We are now stocking 1x8 select tight knot siding in specific lengths. 8', 10', 12', and 16' lengths. The 16' price is a premium price, but the 8-12' are all the same linear foot price



This product can be stained, painted or left natural to patina to a weathered gray.

We have recently added a Prime Source staple that is a 3/8" leg x 3/8" crown A11 style staple. It is electro-galvanized with 5000 staples to a box. The SKU is 'GRA1138' and located on the top shelf by the pneumatic nails.



We recently bought some spring actuated end ratchet straps for our box vans. While the straps sat on the back table, someone wanted to buy them...hence the reason why we now have a few 2" x 20' cargo/trailer van straps in stock for sale. Working load limit is 6000#. Make note, that these straps are designed to be used with a track secured to the van/trailer walls (of which we don't have).

At The Wood Pile



Do you need some 4x12 Rough Fir?
We've got you set up!!
In 'stock' we have:
2 - 4x12 20' rough fir
1 - 4x12 18' rough fir

Maybe you want to build or redo your deck? We have some Trex in stock you might consider.

We have some Sunset Cove Trex in stock.
19 - 20' No groove



- 1 - 16' No groove
- 10 - 12' Grooved
- 11 - 12' No Groove

Facebook Updates:

Get Social with us!!

Are you on Facebook?

If not, this is what you're missing:



Posted 7-20-22

Some people buy long length lumber because they are building a house...

We have long length lumber to make a wall of wood while repairing our gate and fence. It serves a dual purpose today!!

#mmlumber

#mmlumbersouthyard



Posted 8-17-22:

Have you ever wondered what we do when we get a rail car in? First and foremost, we count it and spray paint the bundles if needed for the length and/or product if the bundles are wrapped to make it easier looking for something in overstock.

After the car is counted, we unload it and put it into stock to load in your truck.

#mmlumber

#woodisgood

You are receiving this newsletter because you are a great customer, you are a great vendor partner, you are a friend, family member or we think you are really cool because you have signed up to receive and enjoy our monthly updates. We do not want you to be annoyed by our excessively important information filled newsletters. Feel free to unsubscribe at anytime if you should not be receiving these updates...just know that you will be missed!



**Specializes in Quality Lumber and Selection.
Supplying Builders and Homeowners.**

M&M Lumber
4711 S Mingo
Tulsa, OK 74146

918-627-1926 fx 918-627-2726

www.mmlumberco.com

Monday-Friday 7:00 am - 5:00 pm
Saturdays 7:30 - 12:00 pm

M&M Lumber | 4711 S Mingo, Tulsa, OK 74146

[Unsubscribe whitney@mmlumberco.com](mailto:whitney@mmlumberco.com)

[Update Profile](#) | [Constant Contact Data Notice](#)

Sent by whitney@mmlumberco.com powered by



Try email marketing for free today!