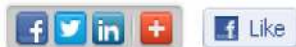


Having trouble viewing this email? [Click here](#)



M&M Lumber Newsletter

April 2015



Hello Friends-
Spring is here
(...talk to my
allergies!) and in
full force with the
grass and trees
greening up Green
Country!!

Construction in
and around Tulsa
remain strong with lots of continued
optimism for it to continue.

Thank you for your business and trust
that we will help you get your job done
right. We continue to work hard to
earn your business.

We hope you find the information in
this newsletter helpful. Join us on



In This Issue

[Market Report](#)

[Lumber Yard News](#)

[At the Wood Pile](#)

[Facebook Updates](#)

[Did you know?](#)

[Useful Information](#)

[Feedback](#)

At the Wood Pile

2x12 8' #3

\$5.00 special
while supplies last!!

Facebook to 'Stay Social' with us and stay in touch throughout the month!

Let us know what you like best about the newsletter and what you'd like to see in the future. We appreciate your business as well as your [feedback](#). If you have any questions, feel free to call or email us! Thank you for supporting M&M Lumber, the place to be for your building and hardware needs.

Sincerely,

M&M Lumber
918-627-1926

Market Report:

Market Update:

Gypsum: No market movement for gypsum to report at this time. Prices are steady and shipment is prompt.



Roofing: Roofing prices are steady and four manufactures have announced a price increase. Owens Corning, May 1 5%. Atlas, May 1 5-7%. Tamko, May 5 5-7%. Malarkey, May 11 5-7%.

Rebar: The rebar market remains soft as import bar has hit the ports. Prices are expected to remain through the end of the month. Domestic mills have held their prices as well. If demand increases in the next few weeks, it is predicted that the domestic mills will raise prices in May.

Lumber: Prices have been flat and should hold at current levels for the next week or two, as demand was less than expected due to the harsh winter weather. Most analysts



Facebook Updates

Get Social with us!!

Are you on Facebook? If not, this is what you're missing:



Posted 4-9-15:
Our current signs...
kind of catchy, hu?

expect lumber prices to increase by the end of April, as there should be greater demand with the warmer and hopefully drier spring weather coming.

Plywood & Panels: As with lumber, plywood and panels are too flat. It is anticipated that with warmer weather a greater demand, and therefore an uptick in prices. As of yet that hasn't happened but is expected.

Other Vendors:

-Visqueen/Poly manufactures are indicating they will raise prices the end of April. Resin prices have increased and price increase are expected for orders placed in May.

-Bagged goods have taken a price increase this month. Mortar mix type N and S, Mason, Portland, and sand mix have all taken a small increase in price.

-Rail road ties again are getting hard to get along with having an extended lead time. We continue to stock a #1 used 8x8x8 rail road tie and have them on order.

Lumber Yard News: What is happening around M&M Lumber?



Posted 4-2-15:
Throw Back Thursday:
M&M Lumber Fish Fry - 2009



Posted 3-25-15:
Great looking building downtown
by West Construction!!

Join in the Facebook fun:
<https://www.facebook.com/mmlumber>

Did you know?

M&M Lumber prides itself on stocking a lot of items needed in your project. There are lots of times we hear 'I didn't know you had that' or 'not everyone carries those'. Here are a few items you may not know we carry:



April Birthdays

Please wish a very big
Happy Birthday to:

Javier Vasquez	April 1
Tim Hogan	April 12
Toby Geltz	April 23
Chris Hurt	April 24
Kathy Pitts	April 26

April will mark the anniversary
date of employment with
M&M Lumber for the
following employee:

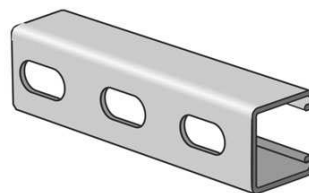
Larry Wilson	36 years!
Javier Vasquez	14 years
Joe Lawson	4 year

New Items

We have recently added several new
items into inventory.



We have added a new cap mould...
This is ideal for capping off a



We are
stocking 10'
pieces of
unistrut!

12 Ga 10' Galvanized Channel
1-5/8 X 1-5/8. Holes are 2" Centers.
Versatile metal framing widely used by
electrical contractors to support
conduit, panel boxes, raceway systems
and other electrical components.

Needing a
dust
mask? We've
got ya
covered...at
least for
mouth and
nose! We
have several different rated masks in
small to larger size packages.



Have a
project that
you need
some soil
containment?
Use silt fence
to skirt your
jobsite.

Hardwood stakes and woven synthetic
fabric. Pre-assembled. Simply unroll,
stretch, and drive stakes. Should be
installed in a 6" deep trench to
prevent sediment flow underneath
fence. Make sure that all supporting
posts are on the down slope side of the
fencing. The 2' stakes are spaced 10'
apart.

wainscoat wall. It measures 11/16" x 1-3/8" and is 8' long.



We are now stocking the Screeneze cap and base in both the bronze and clay color, in 8' and 12' sticks. Screeneze is a simple way to enclose an area with screen.

For more information: [Click here](#)

**Specializes in Quality Lumber and Selection.
Supplying Builders and Homeowners.**

M&M Lumber
4711 S Mingo

Tulsa, OK 74146

918-627-1926 fx 918-627-2726

www.mmlumberco.com

Monday-Friday 7:00 am - 5:00 pm
Saturdays 7:30 - 12:00 pm

[Find us on Facebook](#) 

Useful information:

Tornado Season



Tornado season is upon us and it's time to review your emergency procedures.

- Know where to go at home and work away from glass and windows in an interior room.
- Know the community's warning system.
- Listen to a weather radio.
- Food: have bottled water and ready to eat food
- First aid supplies: band-aids, soap, aspirin, prescription drugs
- Clothing: sturdy shoes, rain gear, blankets, garbage bags
- Tools: Flashlights - battery powered, utility knife, whistle, fire extinguisher
- Entertainment: games and books

Tornado Watch - Tornadoes are possible in and near the watch area.

Tornado Warning - A tornado has been sighted or indicated by weather radar. Tornado warnings indicate imminent danger to life and

You are receiving this newsletter because you are a great customer, you are a great vendor partner, you are a friend, family member or we think you are really cool because you have signed up to receive and enjoy our monthly updates. We do not want you to be annoyed by our excessively important information filled newsletters. Feel free to unsubscribe at anytime if you should not be receiving these updates...just know that you will be missed!



property. Go immediately under ground to a basement, storm cellar or an interior room (closet, hallway or bathroom).

For more information visit the Red Cross webpage: [Click Here](#)

Feedback

Are there items that you need that we don't stock? What are those items? We appreciate your business as well as your [feedback](#).

Join Our Mailing List

[Click here](#)



The mark of responsible forestry



QR Scanner

[Forward email](#)



This email was sent to whitney@mmlumberco.com by whitney@mmlumberco.com | [Update Profile/Email Address](#) | Rapid removal with [SafeUnsubscribe™](#) | [Privacy Policy](#).



M&M Lumber | 4711 S Mingo | www.mmlumberco.com | info@mmlumberco.com | Tulsa | OK | 74146