

Having trouble viewing this email? [Click here](#)



## M&M Lumber Newsletter

**March 2011**



Welcome to the M&M Lumber e-newsletter. We are so happy to have you! Here is what you can expect in our e-newsletter.

M&M Lumber will help keep you up to date with new products, sales, special promotions and tips on a monthly basis.

Privacy is important to us; therefore, we will not sell, rent, or give your name or address to anyone. At any point, you can select the link at the bottom of every email to unsubscribe.

We appreciate your business as well as your [feedback](#). If you have any questions, feel free to call or email us! Thank you for supporting M&M Lumber, the place to be for your building and hardware needs.

Sincerely,

**M&M Lumber**  
**918-627-1926**

## FSC Certification



### In This Issue

[FSC Certification](#)

[Lumber Yard News](#)

[Oklahoma Wood Showplace](#)

[Spring Time](#)

[Market Report](#)

[Feedback](#)

### Oklahoma Wood Showplace

When is the last time you've seen the Oklahoma Wood Showplace? M&M Lumber is proud to introduce a



showroom with one of a kind wood products. These products are made from an assortment of unique species including bark siding, vertical teton, log cabin siding, shakertown siding, flare butt posts, hand hewn pine balusters and more! Come see our display.

[\\*\\*Brochure\\*\\*](#)



Are you working towards LEEDs points for a project? M&M Lumber has their FSC Chain of Custody (CoC) certification. Our FSC certification number is SCS-COC-002810.

This certification allows M&M Lumber to provide our customers the option to purchase materials that have come from well-managed forests and comply with the strict tracking requirements of FSC. As the green building movement seeks to design, build, and operate facilities and homes that use far less energy than their conventional counterparts, M&M Lumber is here to help.

FSC certified material contributes toward credits for the Leadership in Energy and Environmental Design (LEED) in the home (LEED H) and new construction (LEED NC) categories through the U.S. Green Building Council (USGBC). In addition, the use of FSC certified material can raise the number of points that can be achieved through the LEED program as well as the National Home Builders' Green Build Program.

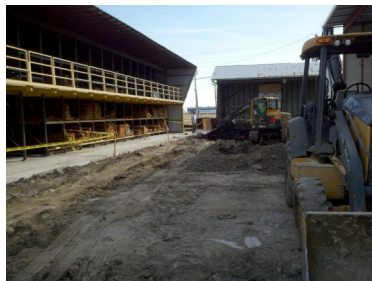
FSC material is readily available and we have aligned ourselves with good suppliers.

Please let us know if we can help you source your material for your upcoming project that you may have. We are happy and willing to discuss with you FSC certified material and our roll in providing it to the market.

## Lumber Yard News:

What's happening around M&M Lumber?

We are hard at work to repair our south yard. This week we have heavy equipment removing the broken concrete, filling in with dirt and will have concrete that will drain the rainwater in the right direction. Progress for a better loading area.



**Specializes in Quality Lumber and Selection.**

**Supplying Builders and Homeowners.**

**M&M Lumber**  
4711 S Mingo  
Tulsa, Oklahoma 74146

## Spring Time

Can you believe it is March already?? Spring is right around the corner and we are starting to prepare for it. Are you?

[Tornado Checklist](#)

M&M Lumber is a proud distributor of Jim Giles' Safe rooms.

For new construction, safe rooms can be installed at the time of framing in a closet or pantry. For existing construction, if placing in the garage, the garage must have a 4" concrete pad.

All safe rooms are 6'8" tall which includes the critter guard/vent.

The three-point locking system is FEMA compliant. The locks are a panic lock in which you must have a key to open to get inside.

Standard doors are 32" wide. 36" doors are available for an additional price.

Custom sizes are available. All prices include install. LIFETIME Warranty on all Shelter units.

[Jim Giles Safe Rooms Information](#)

## Market Report

Current Market:

The lumber market is not simple. It is like a drop of water that is constantly moving in all directions sometimes balled up and sometimes rolled out flat. One thing that is for sure is that it is always changing.

Lumber is about where it was last year at this time - maybe just a few points lower.

Plywood is about the same in that it is just a bit lower than it was a year ago.

Steel products is or are on the rise in the market. Among the items affected are nails and rebar.

Other price increases that have been announced include drywall, insulation and roofing.

## Feedback

**Are there items that you need that we don't stock? What are those items?**

**We appreciate your business as well as your [feedback](#)**

[Join Our Mailing List](#)

918-627-1926 fx 918-627-2726

[www.mmlumberco.com](http://www.mmlumberco.com)

Find us on Facebook 



**Free with  
\$25.00  
purchase!**

March Special! 100' Chalk Reel, 4 oz Black Chalk and Level FREE with a \$25.00 purchase. Coupon must be printed and presented in person. One free Chalk Reel, Black Chalk and Level per customer. Item # 2472102177

Offer Expires: March 31, 2011 or while supplies last

[Forward email](#)

 SafeUnsubscribe™

This email was sent to whitney@mmlumberco.com by [whitney@mmlumberco.com](mailto:whitney@mmlumberco.com) | [Update Profile/Email Address](#) | Rapid removal with [SafeUnsubscribe™](#) | [Privacy Policy](#).



M&M Lumber | 4711 S Mingo | [www.mmlumberco.com](http://www.mmlumberco.com) | [info@mmlumberco.com](mailto:info@mmlumberco.com) | Tulsa | OK | 74146